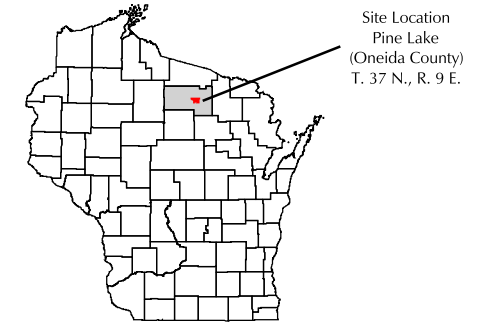


MAP 5-1 LAND COVER & U.S.G.S. QUADRANGLE Town of Pine Lake Oneida County, Wisconsin



State of Wisconsin

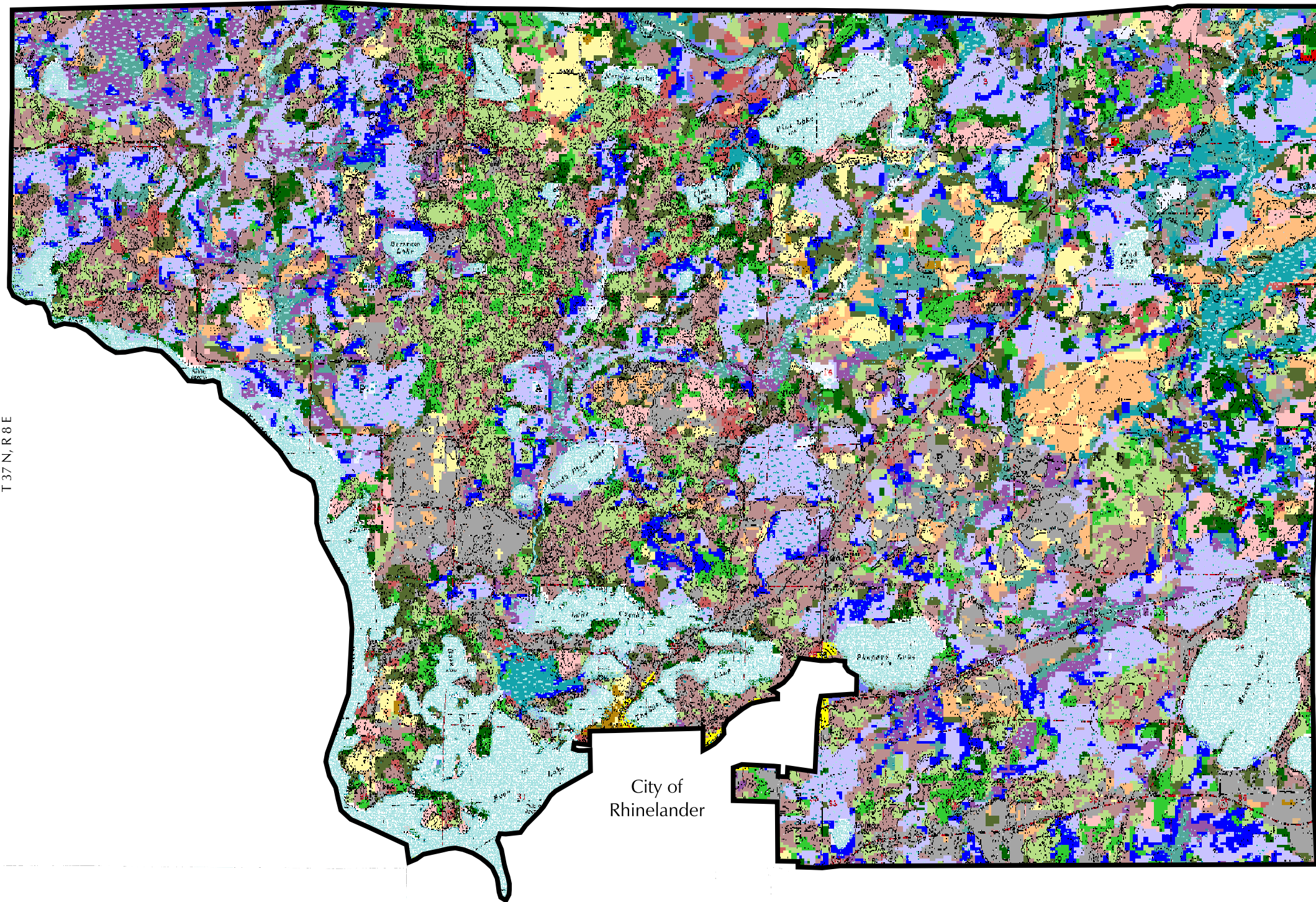
- Developed Areas**
 - Developed Areas
- Agriculture**
 - Other Row Crops
 - Forage Crops
 - Cranberry Bog
 - Grassland
- Forested**
 - Jack Pine
 - Red Pine
 - Mixed/Other Coniferous
 - Aspen
 - Sugar Maple
 - Mixed/Other Broad-leaved Deciduous
 - Mixed Deciduous/Coniferous
- Wetlands**
 - Emergent/Wet Meadow
 - Lowland Shrub
 - Lowland Shrub: Broad-leaved Deciduous
 - Lowland Shrub: Broad-leaved Evergreen
 - Forested: Broad-leaved Deciduous
 - Forested: Coniferous
 - Forested: Mixed Deciduous/Coniferous
 - Shrubland
 - Barren
- Other**
 - Contour Line

This drawing is neither a legally recorded map nor a survey and is not intended to be used as one. This drawing is a compilation of records, information and data used for reference purposes only.

Source: U.S.G.S. 7.5-minute topographic quadrangles - Moen Lake (1982) and Rhinelander (1982), Oneida County.
Classification derived from LANDSAT Thematic Mapper (TM) satellite imagery from 1991, 1992, and 1993. The classification has been "smoothed" to a 1-acre minimum mapping unit (4 contiguous pixels) from the original 30-meter pixel size. Wetlands smaller than 1 acre and open water pixels were not smoothed. Classification was done at the Wisconsin DNR, GEO Services Section.



TOWN OF SUGAR CAMP, ONEIDA COUNTY
T 38 N, R 9 E



TOWN OF NEWBOLD, ONEIDA COUNTY
T 37 N, R 8 E

TOWN OF STELLA, ONEIDA COUNTY
T 37 N, R 10 E

TOWN OF PELICAN, ONEIDA COUNTY
T 36 N, R 9 E